

Anti-Protein PHOTOSYSTEM I ASSEMBLY 2, chloroplastic antibody

Catalog: PHY1228S

Product Information

Description:	Rabbit polyclonal antibody
Background:	PSA2 is a DnaJ/Hsp40 cysteine-rich domain superfamily protein, which involved in female gametophyte development. PSA2 harbors a conserved domain found in DnaJ chaperones where it has been shown to form a zinc finger and to have protein-disulfide isomerase activity. It is required for embryo sac development, the accumulation of photosystem I (PSI) during plant development, and chloroplast development.
Synonyms:	PSA2, EDA3, EMBRYO SAC DEVELOPMENT ARREST 3
Immunogen:	KLH-conjugated synthetic peptide of PSA2 derived from <i>Arabidopsis thaliana</i> AT2G34860.
Form:	Lyophilized
Quantity:	150 µg
Purification:	Serum Peptide affinity form antibody available upon request at info@phytoab.com .
Reconstitution:	Reconstitution with 150µl of sterile water. "Note: please spin tube briefly prior to opening it to avoid any losses that might occur from lyophilized material adhering to the cap or sides of the tube".
Stability & Storage:	Use a manual defrost freezer and avoid repeated freeze-thaw cycles. 12 months from date of receipt, -20 to -70°C as supplied. 6 months, -20 to -70°C under sterile conditions after reconstitution. 1 month, 2 to 8°C under sterile conditions after reconstitution.
Shipping:	The product is shipped at 4°C. Upon receipt, store it immediately at the temperature recommended above.

Application Information

Recommended Dilution:	Western Blot (1:1000-1:2000) Note: Optimal dilutions/concentrations should be determined by the end user.
Expected/apparent MW:	20 / 12 kDa

Research Use Only

Confirmed Reactivity:

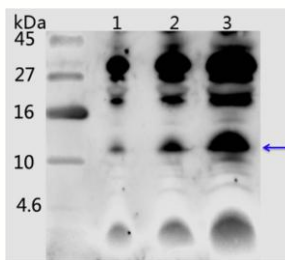
Arabidopsis thaliana

Predicted Reactivity:

Among 25 analyzed species, the sequence of the synthetic peptide used for immunization is 100% homologues with the sequence in *Brassica napus*, and 80-99% homologues with the sequence in *Zea mays*.

For more species homologues information, please contact tech support at tech@phytoab.com.

Application Example



1-3 is thylakoid membrane protein of *Arabidopsis thaliana* leaf containing 1 µg, 2 µg, and 5 µg of chlorophyll, respectively.

Electrophoresis: Tricine-SDS-PAGE

Transfer: blotting to NC (nitrocellulose) membrane for 1 h.

Blocking: 5% skim milk at RT or 4°C for 1 h.

PHY1228S

Primary antibody: 1:1000 dilution overnight at 4°C.

Secondary antibody: 1:10000 dilution using Goat Anti-Rabbit IgG H&L (HRP) (Cat# PHY6000).

Detection: using chemiluminescence substrate and image were captured with CCD camera.