

Anti-Cucurbit aphid-borne yellows virus (CAbYV) Capsid protein antibody

Catalog: NAV1017-003S

Quantity: 200 µL

Immunogen Information:

Background

Cucurbit aphid-borne yellows virus (CAbYV)

Immunogen

KLH-conjugated synthetic peptide (15 aa from N terminal section) derived from Cucurbit aphid-borne yellows virus CAbYV Capsid protein (NCBI: WMI27631).

We also have antibodies for different epitopes from the Capsid protein. Please request at info@nanodiaincs.com or <https://www.nanodiaincs.com>.

Basic Information:

Purification: Serum

Peptide affinity form antibody available upon request at info@nanodiaincs.com.

Clonality: Polyclonal **Expected MW:** 22 kDa **Host:** Rabbit

Product Information:

Form: Lyophilized

Reconstitution

Reconstitution with 200 µL of sterile water.

"Note: please spin tube briefly prior to opening it to avoid any losses that might occur from lyophilized material adhering to the cap or sides of the tube".

Stability & Storage

Use a manual defrost freezer and avoid repeated freeze-thaw cycles.

12 months from date of receipt, -20 to -70°C as supplied.

6 months, -20 to -70°C under sterile conditions after reconstitution.

1 month, 2 to 8°C under sterile conditions after reconstitution.

Shipping

The product is shipped at 4°C. Upon receipt, store it immediately at the temperature recommended above.

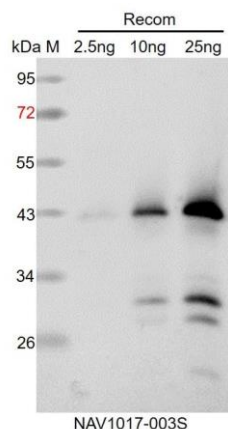
Applications Information:

Recommended Dilution: WB (1:1000-1:2000)

Predicted Reactivity: Among species analyzed, the sequence of the synthetic peptide used for immunization is 100% homologues with the sequence in Bacteriophage sp..

For more species homologues information, please contact tech support at info@nanodiaincs.com.

Example



Recom: 2.5 ng, 10 ng and 25 ng recombinant protein containing the peptide for immunization and having a molecular mass of 42 kDa.

Electrophoresis: 12% SDS-PAGE

Transfer: blotting to NC (nitrocellulose) membrane for 1 h.

Blocking: 5% skim milk at RT or 4°C for 1 h.

Primary antibody: 1:1000 dilution overnight at 4°C.

Secondary antibody: 1:10000 dilution using Goat Anti-Rabbit IgG H&L (HRP) (Cat# PHY6000).

Detection: using chemiluminescence substrate and image were captured with CCD camera.