

Anti-Abscisic acid receptor PYL1 antibody

Catalog: PHY3384S

Product Information

Description:	Rabbit polyclonal antibody
Background:	PYL1 mediate ABA-dependent regulation of protein phosphatase 2Cs ABI1 and ABI2. PYL1 encodes a member of the PYR/PYL/RCAR family proteins with 14 members, and PYR/PYL/RCAR family proteins function as abscisic acid sensors.
Synonyms:	PYL1, PYR1-LIKE 1, RCAR12, REGULATORY COMPONENTS OF ABA RECEPTOR 12
Immunogen:	KLH-conjugated synthetic peptide (14 aa from Central section) derived from <i>Arabidopsis thaliana</i> PYL1 (AT5G46790).
Form:	Lyophilized
Quantity:	150 µg
Purification:	Serum Peptide affinity form antibody available upon request at info@phytoab.com .
Reconstitution:	Reconstitution with 150 µl of sterile water. "Note: please spin tube briefly prior to opening it to avoid any losses that might occur from lyophilized material adhering to the cap or sides of the tube".
Stability & Storage:	Use a manual defrost freezer and avoid repeated freeze-thaw cycles. 12 months from date of receipt, -20 to -70°C as supplied. 6 months, -20 to -70°C under sterile conditions after reconstitution. 1 month, 2 to 8°C under sterile conditions after reconstitution.
Shipping:	The product is shipped at 4°C. Upon receipt, store it immediately at the temperature recommended above.

Application Information

Recommended Dilution:	Western Blot (1:1000-1:3000) Note: Optimal dilutions/concentrations should be determined by the end user.
Expected / apparent MW:	25 kDa
Predicted Reactivity:	Among species analyzed, the sequence of the synthetic peptide used for immunization is 100% homologues with the sequence in <i>Brassica</i>

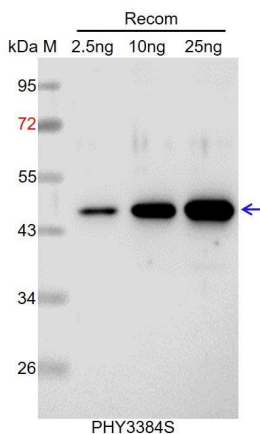
Research Use Only

napus, *Brassica rapa*, and 80-99% homologues with the sequence in *Sorghum bicolor*, *Cucumis sativus*, *Zea mays*, *Hordeum vulgare*, *Oryza sativa*, *Panicum virgatum*, *Setaria viridis*, *Gossypium raimondii*, *Vitis vinifera*, *Glycine max*, *Solanum lycopersicum*, *Solanum tuberosum*, *Spinacia oleracea*, *Nicotiana tabacum*, *Populus trichocarpa*.

The sequence of the synthetic peptide used for immunization is 86% homologues with the sequence in PYL2 (AT2G26040) and PYR1 (AT4G17870).

For more species homologues information, please contact tech support at tech@phytoab.com.

Application Example



Recom: 2.5 ng, 10 ng and 25 ng recombinant protein containing the peptide for immunization and having a molecular mass of 47 kDa.

Electrophoresis: 12% SDS-PAGE

Transfer: blotting to NC (nitrocellulose) membrane for 1 h.

Blocking: 5% skim milk at RT or 4°C for 1 h.

Primary antibody: 1:1000 dilution overnight at 4°C.

Secondary antibody: 1:10000 dilution using Goat Anti-Rabbit IgG H&L (HRP) (Cat# PHY6000).

Detection: using chemiluminescence substrate and image were captured with CCD camera.