

# Anti-Alpha subunit of chloroplast ATP synthase antibody

Catalog: PHY7945A

## Product Information

<b>Description:</b>	Rabbit polyclonal antibody
<b>Background:</b>	ATPA is ATPase alpha subunit, which is a subunit of ATP synthase and part of the CF1 portion which catalyzes the conversion of ADP to ATP using the proton motive force. This complex is located in the thylakoid membrane of the chloroplast.
<b>Synonyms:</b>	ATPA, ATP SYNTHASE SUBUNIT ALPHA
<b>Immunogen:</b>	KLH-conjugated synthetic peptide (15 aa from Central section) derived from <i>Arabidopsis thaliana</i> ATPA (ATCG00120).
<b>Form:</b>	Lyophilized
<b>Quantity:</b>	150 µg
<b>Purification:</b>	Immunogen Affinity Purified
<b>Reconstitution:</b>	Reconstitution with 150 µl of sterile 1×PBS (PH=7.4). "Note: please spin tube briefly prior to opening it to avoid any losses that might occur from lyophilized material adhering to the cap or sides of the tube".
<b>Stability &amp; Storage:</b>	Use a manual defrost freezer and avoid repeated freeze-thaw cycles. 12 months from date of receipt, -20 to -70°C as supplied. 6 months, -20 to -70°C under sterile conditions after reconstitution. 1 month, 2 to 8°C under sterile conditions after reconstitution.
<b>Shipping:</b>	The product is shipped at 4°C. Upon receipt, store it immediately at the temperature recommended above.

## Application Information

<b>Recommended Dilution:</b>	Western Blot (1:1000-1:5000) Note: Optimal dilutions/concentrations should be determined by the end user.
<b>Expected / apparent MW:</b>	55 kDa
<b>Predicted Reactivity:</b>	Among species analyzed, the sequence of the synthetic peptide used for immunization is 100% homologues with the sequence in <i>Zea mays</i> , <i>Triticum aestivum</i> , <i>Hordeum vulgare</i> , <i>Oryza sativa</i> , <i>Glycine</i>

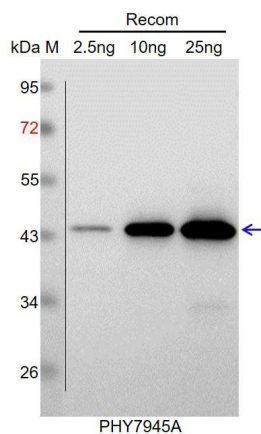
Research Use Only

*max*, *Medicago truncatula*, *Chlamydomonas reinhardtii*, *Brassica rapa*, *Solanum lycopersicum*, *Populus trichocarpa*, *Vitis vinifera*, *Gossypium raimondii*, *Brassica napus*, *Cucumis sativus*, *Solanum tuberosum*, *Nicotiana tabacum*, *Spinacia oleracea*, *Panicum virgatum*, *Leymus chinensis*.

The sequence of the synthetic peptide used for immunization is 93% (14 / 15) homologues with the sequence in AT2G07698.

For more species homologues information, please contact tech support at [tech@phytoab.com](mailto:tech@phytoab.com).

## Application Example



Recom: 2.5 ng, 10 ng and 25 ng recombinant protein containing the peptide for immunization and having a molecular mass of 45 kDa.

**Electrophoresis:** 12% SDS-PAGE

**Transfer:** blotting to NC (nitrocellulose) membrane for 1 h.

**Blocking:** 5% skim milk at RT or 4°C for 1 h.

**Primary antibody:** 1:1000 dilution overnight at 4°C.

**Secondary antibody:** 1:10000 dilution using Goat Anti-Rabbit IgG H&L (HRP) (Cat# PHY6000).

**Detection:** using chemiluminescence substrate and image were captured with CCD camera.