

# Anti-MADS box transcription factor antibody

Catalog: PHY6337S

## Product Information

<b>Description:</b>	Rabbit polyclonal antibody
<b>Background:</b>	TraesCS5D02G401500
<b>Synonyms:</b>	VRN-D1
<b>Immunogen:</b>	KLH-conjugated synthetic peptide (15 aa from N terminal section) derived from <i>Triticum aestivum</i> VRN-D1 (TraesCS5D02G401500).
<b>Form:</b>	Lyophilized
<b>Quantity:</b>	150 µg
<b>Purification:</b>	Serum
	Peptide affinity form antibody available upon request at <a href="mailto:info@phytoab.com">info@phytoab.com</a> .
<b>Reconstitution:</b>	Reconstitution with 150 µl of sterile water. "Note: please spin tube briefly prior to opening it to avoid any losses that might occur from lyophilized material adhering to the cap or sides of the tube".
<b>Stability &amp; Storage:</b>	Use a manual defrost freezer and avoid repeated freeze-thaw cycles.
	12 months from date of receipt, -20 to -70°C as supplied.
	6 months, -20 to -70°C under sterile conditions after reconstitution.
	1 month, 2 to 8°C under sterile conditions after reconstitution.
<b>Shipping:</b>	The product is shipped at 4°C. Upon receipt, store it immediately at the temperature recommended above.

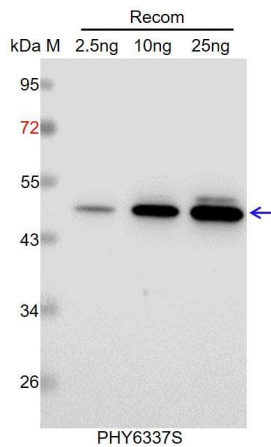
## Application Information

<b>Recommended Dilution:</b>	Western Blot (1:1000-1:2000) Note: Optimal dilutions/concentrations should be determined by the end user.
<b>Expected / apparent MW:</b>	28 kDa
<b>Predicted Reactivity:</b>	Among species analyzed, the sequence of the synthetic peptide used for immunization is 100% homologues with the sequence <i>Hordeum vulgare</i> , <i>Triticum aestivum</i> , and 80-99% homologues with the sequence in <i>Setaria viridis</i> , <i>Zea mays</i> , <i>Sorghum bicolor</i> , <i>Vitis vinifera</i> , <i>Oryza sativa</i> , <i>Cucumis sativus</i> , <i>Solanum tuberosum</i> , <i>Solanum lycopersicum</i> , <i>Nicotiana tabacum</i> .

Research Use Only

For more species homologues information, please contact tech support at [tech@phytoab.com](mailto:tech@phytoab.com).

## Application Example



Recom: 2.5 ng, 10 ng and 25 ng recombinant protein containing the peptide for immunization and having a molecular mass of 50 kDa.

**Electrophoresis:** 12% SDS-PAGE

**Transfer:** blotting to NC (nitrocellulose) membrane for 1 h.

**Blocking:** 5% skim milk at RT or 4°C for 1 h.

**Primary antibody:** 1:1000 dilution overnight at 4°C.

**Secondary antibody:** 1:10000 dilution using Goat Anti-Rabbit IgG H&L (HRP) (Cat# PHY6000).

**Detection:** using chemiluminescence substrate and image were captured with CCD camera.