

Anti-Protease Do-like 1, chloroplastic, C-terminal antibody

Catalog: PHY7965A

Product Information

Description:	Rabbit polyclonal antibody
Background:	Deg1 is a nuclear gene encoding chloroplast-targeted protease that can degrade two luminal proteins, plastocyanin and OE33, suggesting a role as a general-purpose protease in the thylakoid lumen. It is involved in the degradation of D1 protein of PS II, hence participating in the repair of PS II damages caused by photoinhibition.
Synonyms:	Deg1, DEGP PROTEASE 1, DEGP1, DEGRADATION OF PERIPLASMIC PROTEINS 1
Immunogen:	KLH-conjugated synthetic peptide (15 aa from C terminal section) derived from <i>Arabidopsis thaliana</i> Deg1 (AT3G27925).
Form:	Lyophilized
Quantity:	150 µg
Purification:	Immunogen Affinity Purified
Reconstitution:	Reconstitution with 150 µl of sterile 1×PBS (PH=7.4). "Note: please spin tube briefly prior to opening it to avoid any losses that might occur from lyophilized material adhering to the cap or sides of the tube".
Stability &	Use a manual defrost freezer and avoid repeated freeze-thaw cycles.
Storage:	12 months from date of receipt, -20 to -70°C as supplied. 6 months, -20 to -70°C under sterile conditions after reconstitution. 1 month, 2 to 8°C under sterile conditions after reconstitution.
Shipping:	The product is shipped at 4°C. Upon receipt, store it immediately at the temperature recommended above.

Application Information

Recommended Dilution:	Western Blot (1:1000-1:2000) Note: Optimal dilutions/concentrations should be determined by the end user.
Expected / apparent MW:	47 kDa

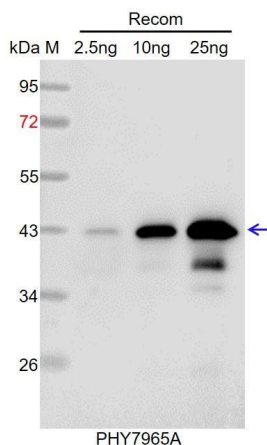
Research Use Only

Predicted Reactivity:

Among species analyzed, the sequence of the synthetic peptide used for immunization is 100% homologues with the sequence in *Brassica napus*, *Brassica rapa*, and 80-99% homologues with the sequence in *Setaria viridis*, *Glycine max*, *Panicum virgatum*, *Oryza sativa*, *Medicago truncatula*, *Triticum aestivum*, *Hordeum vulgare*, *Sorghum bicolor*, *Populus trichocarpa*, *Zea mays*, *Spinacia oleracea*, *Gossypium raimondii*, *Vitis vinifera*, *Cucumis sativus*, *Nicotiana tabacum*, *Solanum tuberosum*, *Solanum lycopersicum*.

For more species homologues information, please contact tech support at tech@phytoab.com.

Application Example



Recom: 2.5 ng, 10 ng and 25 ng recombinant protein containing the peptide for immunization and having a molecular mass of 43 kDa.

Electrophoresis: 12% SDS-PAGE

Transfer: blotting to NC (nitrocellulose) membrane for 1 h.

Blocking: 5% skim milk at RT or 4°C for 1 h.

Primary antibody: 1:1000 dilution overnight at 4°C.

Secondary antibody: 1:10000 dilution using Goat Anti-Rabbit IgG H&L (HRP) (Cat# PHY6000).

Detection: using chemiluminescence substrate and image were captured with CCD camera.