

Anti-Cryptochrome-1 antibody

Catalog: PHY1707S

Product Information

Description:	Rabbit polyclonal antibody
Background:	CRY1 is a flavin-type blue-light photoreceptor with ATP binding and autophosphorylation activity. Photoreceptor activity requires light-induced homodimerisation of the N-terminal CNT1 domains of CRY1. It functions in perception of blue / green ratio of light and is involved in blue-light induced stomatal opening.
Synonyms:	CRY1, ATCRY1, BLU1, BLUE LIGHT UNINHIBITED 1, CRYPTOCHROME 1, ELONGATED HYPOCOTYL 4, HY4, OOP2, OUT OF PHASE 2
Immunogen:	Recombinant protein of CRY1 (471-681 aa) derived from <i>Arabidopsis thaliana</i> AT4G08920.
Form:	Lyophilized
Quantity:	150 µg
Purification:	Serum
Reconstitution:	Reconstitution with 150 µl of sterile water. "Note: please spin tube briefly prior to opening it to avoid any losses that might occur from lyophilized material adhering to the cap or sides of the tube".
Stability & Storage:	Use a manual defrost freezer and avoid repeated freeze-thaw cycles. 12 months from date of receipt, -20 to -70°C as supplied. 6 months, -20 to -70°C under sterile conditions after reconstitution. 1 month, 2 to 8°C under sterile conditions after reconstitution.
Shipping:	The product is shipped at 4°C. Upon receipt, store it immediately at the temperature recommended above.

Application Information

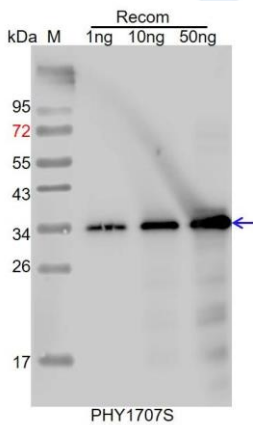
Recommended Dilution:	Western Blot (1:1000-1:2000) Note: Optimal dilutions/concentrations should be determined by the end user.
Expected / apparent MW:	77 kDa
Confirmed Reactivity:	<i>Arabidopsis thaliana</i>

Research Use Only

Predicted Reactivity:

For more species homologues information, please contact tech support at tech@phytoab.com.

Application Example Example1



Recom: 1 ng, 10 ng and 50 ng recombinant protein containing the peptide for immunization and having a molecular mass of 34 kDa.

Electrophoresis: 15% SDS-PAGE

Transfer: blotting to NC (nitrocellulose) membrane for 1 h.

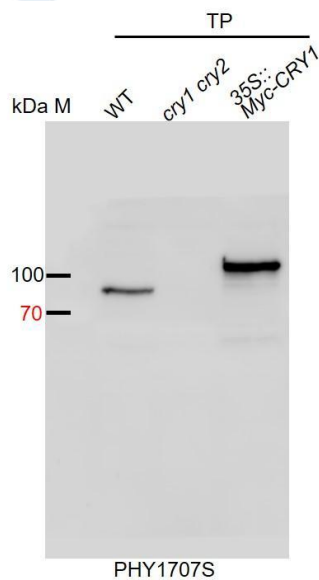
Blocking: 5% skim milk at RT or 4°C for 1 h.

Primary antibody: 1:1000 dilution overnight at 4°C.

Secondary antibody: 1:10000 dilution using Goat Anti-Rabbit IgG H&L (HRP) (Cat# PHY6000)

Detection: using chemiluminescence substrate and image were captured with CCD camera.

Example2



WT: 20 µg total protein from *Arabidopsis thaliana*.

cry1 cry2: 20 µg total protein from *cry1 cry2* mutant of *Arabidopsis thaliana*.

35S::Myc-CRY1: 20 µg total protein from 35S::Myc-CRY1 of *Arabidopsis thaliana*.

Electrophoresis: 10% SDS-PAGE

Transfer: blotting to NC (nitrocellulose) membrane for 1 h.

Blocking: 5% skim milk at RT or 4°C for 1 h.

Primary antibody: 1:1000 dilution overnight at 4°C.

Secondary antibody: 1:10000 dilution using Goat Anti-Rabbit IgG H&L (HRP) (Cat# PHY6000)

Detection: using chemiluminescence substrate and image were captured with CCD camera.