

Anti-Histone H3-like centromeric protein CENH3 antibody

Catalog: PHY7449A

Product Information

Description:	Rabbit polyclonal antibody
Background:	Histone H3-like variant exclusively replaces conventional H3 in the nucleosome core of centromeric chromatin at the inner plate of the kinetochore. It is required for recruitment and assembly of kinetochore proteins, mitotic progression and chromosome segregation. And it may serve as an epigenetic mark that propagates centromere identity through replication and cell division.
Synonyms:	CENH3, CENTROMERIC HISTONE H3, HTR12
Immunogen:	KLH-conjugated synthetic peptide (18 aa from Central section) derived from <i>Arabidopsis thaliana</i> CENH3 (AT1G01370).
Form:	Lyophilized
Quantity:	150 µg
Purification:	Immunogen affinity purified
Reconstitution:	Reconstitution with 150 µl of sterile 1XPBS (PH=7.4). "Note: please spin tube briefly prior to opening it to avoid any losses that might occur from lyophilized material adhering to the cap or sides of the tube".
Stability & Storage:	Use a manual defrost freezer and avoid repeated freeze-thaw cycles. 12 months from date of receipt, -20 to -70°C as supplied. 6 months, -20 to -70°C under sterile conditions after reconstitution. 1 month, 2 to 8°C under sterile conditions after reconstitution.
Shipping:	The product is shipped at 4°C. Upon receipt, store it immediately at the temperature recommended above.

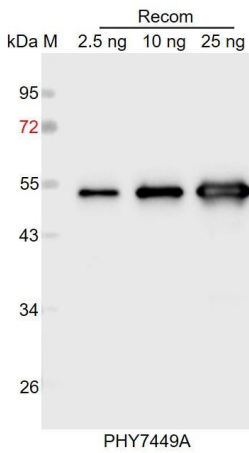
Application Information

Applications:	Western Blot (1:1000-1:2000), ChIP-Seq, IF Note: Optimal dilutions/concentrations should be determined by the end user.
Expected Results:	20 kDa
Predicted Reactivity:	For more species homologues information, please contact tech support at tech@phytoab.com .

Research Use Only

Application Example

Example1



Recom: 2.5 ng, 10 ng and 25 ng recombinant protein containing the peptide for immunization and having a molecular mass of 53 kDa.

Electrophoresis: 12% SDS-PAGE

Transfer: blotting to NC (nitrocellulose) membrane for 1 h.

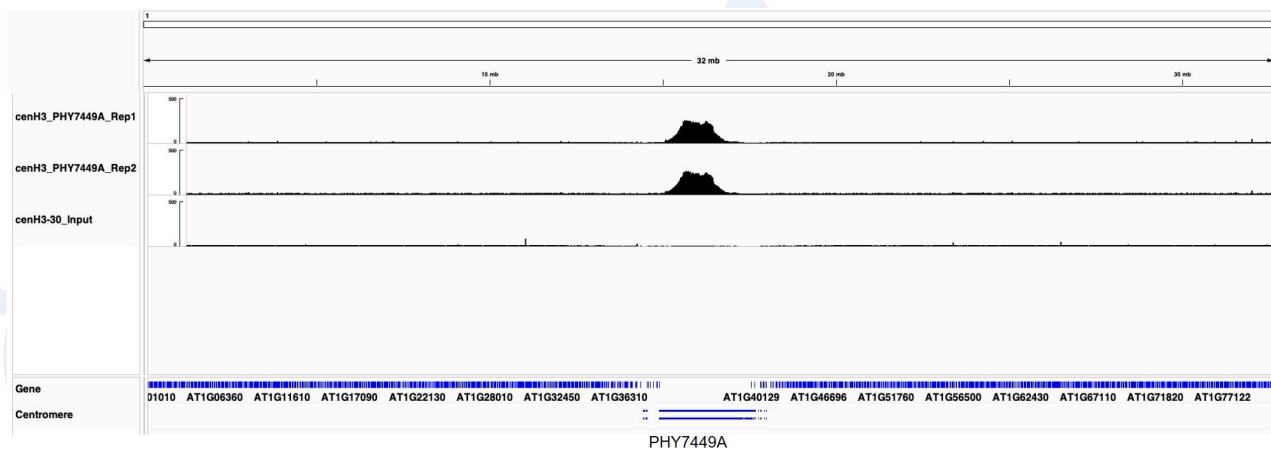
Blocking: 5% skim milk at RT or 4°C for 1 h.

Primary antibody: 1:1000 dilution overnight at 4°C.

Secondary antibody: 1:10000 dilution using Goat Anti-Rabbit IgG H&L (HRP) (Cat# PHY6000).

Detection: using chemiluminescence substrate and image were captured with CCD camera.

Example2



Anti-CENH3 Antibody tested by Chip-seq. Chromatin was prepared from *Arabidopsis thaliana*. 1.5 g of the *Arabidopsis thaliana* seedlings were fixed in 1% formaldehyde for 15 minutes, followed by the addition of 100 mmol/L glycine to terminate the fixation reaction. Rabbit IgG was used as the negative control (Input). The supernatant was incubated with 7 μ l of a CENH3 antibody. Immunocomplexes were captured for two hours at 4°C.