

Anti-Ageratum enation virus (AEV) Capsid protein antibody

Catalog: NAV1041-001S

Quantity: 200 µL

Immunogen Information:

Background

Ageratum enation virus (AEV)

Immunogen

KLH-conjugated synthetic peptide (15 aa from Central section) derived from Ageratum enation virus AEV Capsid protein (Uniprot: Q8QVH3 NCBI: NP_598187). [We also have antibodies for different epitopes from the Capsid protein. Please request at info@nanodiaincs.com](mailto:info@nanodiaincs.com) or <https://www.nanodiaincs.com>.

Basic Information:

Purification: Serum

Peptide affinity form antibody available upon request at info@nanodiaincs.com.

Clonality: Polyclonal **Expected MW:** 30 kDa **Host:** Rabbit

Product Information:

Form: Lyophilized

Reconstitution

Reconstitution with 200 µL of sterile water.

"Note: please spin tube briefly prior to opening it to avoid any losses that might occur from lyophilized material adhering to the cap or sides of the tube".

Stability & Storage

Use a manual defrost freezer and avoid repeated freeze-thaw cycles.

12 months from date of receipt, -20 to -70°C as supplied.

6 months, -20 to -70°C under sterile conditions after reconstitution.

1 month, 2 to 8°C under sterile conditions after reconstitution.

Shipping

The product is shipped at 4°C. Upon receipt, store it immediately at the temperature recommended above.

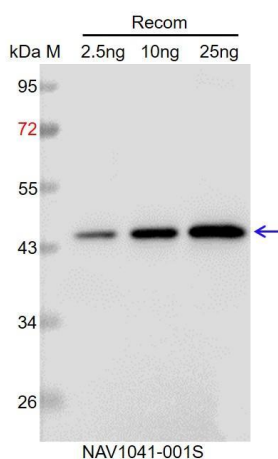
Applications Information:

Recommended Dilution: WB (1:1000-1:2000)

Predicted Reactivity: The sequence of the synthetic peptide used for immunization is 100% homologues with the sequence in Chilli leaf curl virus, Tomato leaf curl virus, Sida yellow vein Madurai virus, Croton yellow vein mosaic virus, Cotton leaf curl virus, Fenugreek yellow vein virus, Corchorus yellow vein mosaic virus, French bean severe leaf curl virus, Malvastrum leaf curl virus, Senna leaf curl virus, Papaya leaf curl virus, Squash leaf curl China virus.

For more species homologues information, please contact tech support at info@nanodiaincs.com.

Example



Recom: 2.5 ng, 10 ng and 25 ng recombinant protein containing the peptide for immunization and having a molecular mass of 45 kDa.

Electrophoresis: 12% SDS-PAGE

Transfer: blotting to NC (nitrocellulose) membrane for 1 h.

Blocking: 5% skim milk at RT or 4°C for 1 h.

Primary antibody: 1:1000 dilution overnight at 4°C.

Secondary antibody: 1:10000 dilution using Goat Anti-Mouse IgG H&L (HRP) (Cat# PHY6006).

Detection: using chemiluminescence substrate and image were captured with CCD camera.