

# Anti-Serine/threonine-protein kinase ATR antibody

Catalog: PHY3713A

## Product Information

<b>Description:</b>	Rabbit polyclonal antibody
<b>Background:</b>	ATR protein kinase is involved in a wide range of responses to DNA damage and plays a central role in cell-cycle regulation. Dominant loss of function alleles identified as suppressors of ALS also exhibit increased tolerance to aluminum. This may be due to the inhibition of terminal differentiation of the root apex upon exposure to Al.
<b>Synonyms:</b>	ATR, ARABIDOPSIS THALIANA ATAXIA TELANGIECTASIA-MUTATED AND RAD3-RELATED, ATATR, ATAXIA TELANGIECTASIA-MUTATED AND RAD3-RELATED, ATRAD3
<b>Immunogen:</b>	KLH-conjugated synthetic peptide (17 aa from C terminal section) derived from <i>Arabidopsis thaliana</i> ATR (AT5G40820).
<b>Form:</b>	Lyophilized
<b>Quantity:</b>	150 µg
<b>Purification:</b>	Immunogen Affinity Purify
<b>Reconstitution:</b>	Reconstitution with 150µl of sterile 1×PBS (PH=7.4). "Note: please spin tube briefly prior to opening it to avoid any losses that might occur from lyophilized material adhering to the cap or sides of the tube".
<b>Stability &amp;</b>	Use a manual defrost freezer and avoid repeated freeze-thaw cycles.
<b>Storage:</b>	12 months from date of receipt, -20 to -70°C as supplied. 6 months, -20 to -70°C under sterile conditions after reconstitution. 1 month, 2 to 8°C under sterile conditions after reconstitution.
<b>Shipping:</b>	The product is shipped at 4°C. Upon receipt, store it immediately at the temperature recommended above.

## Application Information

<b>Recommended Dilution:</b>	Western Blot (1:1000-1:2000) Note: Optimal dilutions/concentrations should be determined by the end user.
<b>Expected / apparent MW:</b>	302 kDa

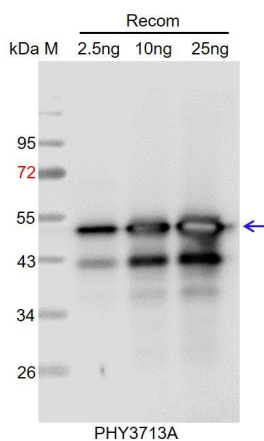
Research Use Only

### Predicted Reactivity:

Among species analyzed, the sequence of the synthetic peptide used for immunization is 100% homologues with the sequence in *Brassica rapa*, *Brassica napus*.

For more species homologues information, please contact tech support at [tech@phytoab.com](mailto:tech@phytoab.com).

### Application Example



Recom: 2.5 ng, 10 ng and 25 ng recombinant protein containing the peptide for immunization and having a molecular mass of 53 kDa.

**Electrophoresis:** 12% SDS-PAGE

**Transfer:** blotting to NC (nitrocellulose) membrane for 1 h.

**Blocking:** 5% skim milk at RT or 4°C for 1 h.

**Primary antibody:** 1:1000 dilution overnight at 4°C.

**Secondary antibody:** 1:10000 dilution using Goat Anti-Rabbit IgG H&L (HRP) (Cat# PHY6000).

**Detection:** using chemiluminescence substrate and image were captured with CCD camera.