

Anti-Transcription factor bHLH122 antibody

Catalog: PHY7922A

Product Information

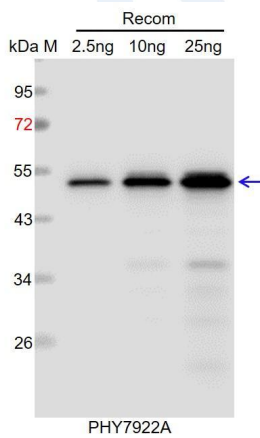
Description:	Rabbit polyclonal antibody
Background:	FBH3 involves in photoperiodism flowering. FBH3 binds to the E-box cis-element in the CONSTANS (CO) promoter to regulate flowering. And It can interact with CFL1 and along with CFLAP2 negatively regulates cuticle development.
Synonyms:	FBH3, ABA-RESPONSIVE KINASE SUBSTRATE 1, AKS1, ATCFL1 ASSOCIATED PROTEIN 1, CFLAP1, FLOWERING BHLH 3
Immunogen:	KLH-conjugated synthetic peptide (17 aa from N terminal section) derived from <i>Arabidopsis thaliana</i> FBH3 (AT1G51140).
Form:	Lyophilized
Quantity:	150 µg
Purification:	Immunogen Affnity Purified
Reconstitution:	Reconstitution with 150 µl of sterile 1×PBS (PH=7.4). "Note: please spin tube briefly prior to opening it to avoid any losses that might occur from lyophilized material adhering to the cap or sides of the tube".
Stability & Storage:	Use a manual defrost freezer and avoid repeated freeze-thaw cycles. 12 months from date of receipt, -20 to -70°C as supplied. 6 months, -20 to -70°C under sterile conditions after reconstitution. 1 month, 2 to 8°C under sterile conditions after reconstitution.
Shipping:	The product is shipped at 4°C. Upon receipt, store it immediately at the temperature recommended above.

Application Information

Recommended Dilution:	Western Blot (1:1000-1:2000) Note: Optimal dilutions/concentrations should be determined by the end user.
Expected / apparent MW:	42 kDa
Predicted Reactivity:	For more species homologues information, please contact tech support at tech@phytoab.com .

Research Use Only

Application Example



Recom: 2.5 ng, 10 ng and 25 ng recombinant protein containing the peptide for immunization and having a molecular mass of 53 kDa.

Electrophoresis: 12% SDS-PAGE

Transfer: blotting to NC (nitrocellulose) membrane for 1 h.

Blocking: 5% skim milk at RT or 4°C for 1 h.

Primary antibody: 1:1000 dilution overnight at 4°C.

Secondary antibody: 1:10000 dilution using Goat Anti-Rabbit IgG H&L (HRP) (Cat# PHY6000).

Detection: using chemiluminescence substrate and image were captured with CCD camera.