

# Anti-LURP-one-like protein (DUF567), N-terminal antibody

Catalog: PHY7839A

## Product Information

<b>Description:</b>	Rabbit polyclonal antibody
<b>Background:</b>	LURP1 is a member of the LURP cluster (late upregulated in response to <i>Hyaloperonospora parasitica</i> ) which exhibits a pronounced upregulation after recognition of the pathogenic oomycete <i>H. parasitica</i> . LURP1 is required for full basal defense to <i>H. parasitica</i> and resistance to this pathogen mediated by the R-proteins RPP4 and RPP5.
<b>Synonyms:</b>	LURP1, LATE UPREGULATED IN RESPONSE TO HYALOPERONOSPORA PARASITICA
<b>Immunogen:</b>	KLH-conjugated synthetic peptide (16 aa from N terminal section) derived from <i>Arabidopsis thaliana</i> LURP1 (AT2G14560).
<b>Form:</b>	Lyophilized
<b>Quantity:</b>	150 µg
<b>Purification:</b>	Immunogen Affinity Purified
<b>Reconstitution:</b>	Reconstitution with 150 µl of sterile 1×PBS (PH=7.4). "Note: please spin tube briefly prior to opening it to avoid any losses that might occur from lyophilized material adhering to the cap or sides of the tube".
<b>Stability &amp;</b>	Use a manual defrost freezer and avoid repeated freeze-thaw cycles.
<b>Storage:</b>	12 months from date of receipt, -20 to -70°C as supplied. 6 months, -20 to -70°C under sterile conditions after reconstitution. 1 month, 2 to 8°C under sterile conditions after reconstitution.
<b>Shipping:</b>	The product is shipped at 4°C. Upon receipt, store it immediately at the temperature recommended above.

## Application Information

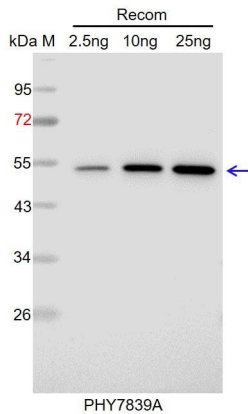
<b>Recommended Dilution:</b>	Western Blot (1:1000-1:2000) Note: Optimal dilutions/concentrations should be determined by the end user.
<b>Expected / apparent MW:</b>	30 kDa

Research Use Only

**Predicted Reactivity:**

For more species homologues information, please contact tech support at [tech@phytoab.com](mailto:tech@phytoab.com).

**Application Example**



Recom: 2.5 ng, 10 ng and 25 ng recombinant protein containing the peptide for immunization and having a molecular mass of 53 kDa.

**Electrophoresis:** 12% SDS-PAGE

**Transfer:** blotting to NC (nitrocellulose) membrane for 1 h.

**Blocking:** 5% skim milk at RT or 4°C for 1 h.

**Primary antibody:** 1:1000 dilution overnight at 4°C.

**Secondary antibody:** 1:10000 dilution using Goat Anti-Rabbit IgG H&L (HRP) (Cat# PHY6000).

**Detection:** using chemiluminescence substrate and image were captured with CCD camera.