

# Anti-Hypersensitive to High Light 1 antibody

Catalog: PHY0483S

## Product Information

<b>Description:</b>	Rabbit polyclonal antibody
<b>Background:</b>	HHL1 is a chloroplast protein and participates in photodamage repair of PSII under high light. Mutants without HHL1 mutants show hypersensitivity to high light and drastically decreased PSII photosynthetic activity. HHL1 associates with the PSII core monomer complex through direct interaction with PSII core proteins CP43 and CP47, and also interacts with LQY1, which functions in the repair and reassembly of PSII.
<b>Synonyms:</b>	HHL1, HYPERSENSITIVE TO HIGH LIGHT 1
<b>Immunogen:</b>	KLH-conjugated synthetic peptide (15 aa from C terminal section) derived from <i>Arabidopsis thaliana</i> HHL1 (AT1G67700).
<b>Form:</b>	Lyophilized
<b>Quantity:</b>	150 µg
<b>Purification:</b>	Serum Peptide affinity form antibody available upon request at <a href="mailto:info@phytoab.com">info@phytoab.com</a> .
<b>Reconstitution:</b>	Reconstitution with 150 µl of sterile water. "Note: please spin tube briefly prior to opening it to avoid any losses that might occur from lyophilized material adhering to the cap or sides of the tube".
<b>Stability &amp; Storage:</b>	Use a manual defrost freezer and avoid repeated freeze-thaw cycles. 12 months from date of receipt, -20 to -70°C as supplied. 6 months, -20 to -70°C under sterile conditions after reconstitution. 1 month, 2 to 8°C under sterile conditions after reconstitution.
<b>Shipping:</b>	The product is shipped at 4°C. Upon receipt, store it immediately at the temperature recommended above.

## Application Information

<b>Recommended Dilution:</b>	Western Blot (1:1000-1:2000) Note: Optimal dilutions/concentrations should be determined by the end user.
<b>Expected / apparent MW:</b>	26 kDa

Research Use Only

**Confirmed Reactivity:**

*Arabidopsis thaliana*

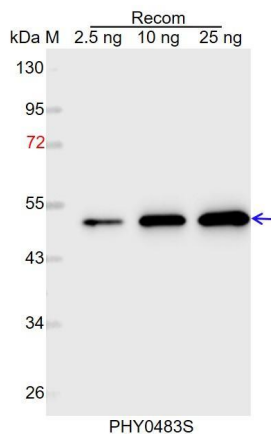
**Predicted Reactivity:**

Among species analyzed, the sequence of the synthetic peptide used for immunization is 80-99% homologues with the sequence in *Vitis vinifera*, *Brassica napus*, *Brassica rapa*, *Glycine max*, *Gossypium raimondii*, *Populus trichocarpa*, *Spinacia oleracea*, *Nicotiana tabacum*, *Solanum tuberosum*, *Solanum lycopersicum*, *Cucumis sativus*, *Medicago truncatula*.

For more species homologues information, please contact tech support at [tech@phytoab.com](mailto:tech@phytoab.com).

## Application Example

### Example1:



Recom: 2.5 ng, 10 ng and 25 ng recombinant protein containing the peptide for immunization and having a molecular mass of 52 kDa.

**Electrophoresis:** 12% SDS-PAGE

**Transfer:** blotting to NC (nitrocellulose) membrane for 1 h.

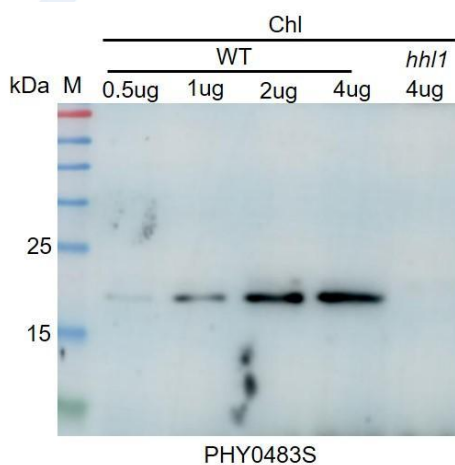
**Blocking:** 5% skim milk at RT or 4°C for 1 h.

**Primary antibody:** 1:1000 dilution overnight at 4°C.

**Secondary antibody:** 1:10000 dilution using Goat Anti-Rabbit IgG H&L (HRP) (Cat# PHY6000).

**Detection:** using chemiluminescence substrate and image were captured with CCD camera.

### Example2:



Chl-WT: 0.5  $\mu$ g, 1  $\mu$ g, 2 $\mu$ g and 4  $\mu$ g total chloroplast protein from WT of *Arabidopsis thaliana*.

Chl-*hhl1*: 4  $\mu$ g total chloroplast protein from *hhl1* of *Arabidopsis thaliana*.

**Electrophoresis:** 12% SDS-PAGE

**Transfer:** blotting to NC (nitrocellulose) membrane for 1 h.

**Blocking:** 5% skim milk at RT or 4°C for 1 h.

**Primary antibody:** 1:5000 dilution overnight at 4°C.

**Secondary antibody:** 1:5000 dilution using Goat Anti-Rabbit IgG H&L (HRP) (Cat# PHY6000).

**Detection:** using chemiluminescence substrate and image were captured with CCD camera.