

Anti-Cotton leaf crumple virus (CLCrV) Capsid protein-AV1 antibody

Catalog: NAV1015-002S

Quantity: 200 µL

Immunogen Information:

Background

Cotton leaf crumple virus (CLCrV)

Immunogen

KLH-conjugated synthetic peptide (15 aa from N terminal section) derived from Cotton leaf crumple virus CLCrV Capsid protein-AV1 (Uniprot: Q80A45 NCBI: NP_795337). [We also have antibodies for different epitopes from the Capsid protein. Please request at \[info@nanodiaincs.com\]\(mailto:info@nanodiaincs.com\) or <https://www.nanodiaincs.com>.](#)

Basic Information:

Purification: Serum

Peptide affinity form antibody available upon request at info@nanodiaincs.com.

Clonality: Polyclonal **Expected MW:** 29 kDa **Host:** Rabbit

Product Information:

Form: Lyophilized

Reconstitution

Reconstitution with 200 µL of sterile water.

"Note: please spin tube briefly prior to opening it to avoid any losses that might occur from lyophilized material adhering to the cap or sides of the tube".

Stability & Storage

Use a manual defrost freezer and avoid repeated freeze-thaw cycles.

12 months from date of receipt, -20 to -70°C as supplied.

6 months, -20 to -70°C under sterile conditions after reconstitution.

1 month, 2 to 8°C under sterile conditions after reconstitution.

Shipping

The product is shipped at 4°C. Upon receipt, store it immediately at the temperature recommended above.

Applications Information:

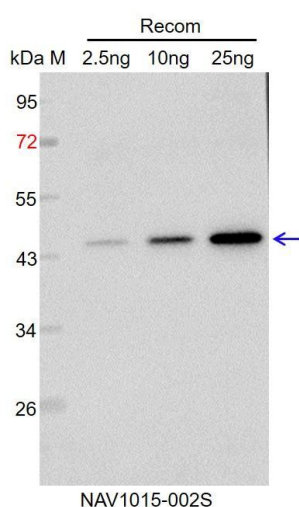
Recommended Dilution: WB (1:1000-1:2000)

Predicted Reactivity: Among species analyzed, the sequence of the synthetic peptide used for immunization is 100% homologues with the sequence in Tomato chlorotic mottle virus, Tomato golden mottle virus, Tomato yellow leaf curl virus, Tomato leaf curl virus, Pepper yellow vein Mali virus, Datura leaf curl virus, Begomovirus pyrenacanthae, Cotton leaf curl Gezira virus, Tomato curly stunt virus, Deinbolliia mosaic

virus, Squash leaf curl virus, Okra yellow mosaic Mexico virus, Bean bushy stunt virus, Chilli leaf curl virus, Geminiviridae sp., Cotton leaf curl Gezira virus, Dicliptera yellow mottle virus, Dominican Republic, Begomovirus paulistiensis, Guatemala, Sida micrantha mosaic virus, Watermelon chlorotic stunt virus, Whitefly-associated begomovirus 7.

For more species homologues information, please contact tech support at info@nanodiaincs.com.

Example



Recom: 2.5 ng, 10 ng and 25 ng recombinant protein

containing the peptide for immunization and having a molecular mass of 45 kDa.

Electrophoresis: 12% SDS-PAGE

Transfer: blotting to NC (nitrocellulose) membrane for 1 h.

Blocking: 5% skim milk at RT or 4°C for 1 h.

Primary antibody: 1:1000 dilution overnight at 4°C.

Secondary antibody: 1:10000 dilution using Goat Anti-Rabbit IgG H&L (HRP) (Cat# PHY6000).

Detection: using chemiluminescence substrate and image were captured with CCD camera.