

Anti-Histidine-containing phosphotransfer protein 1 antibody

Catalog: PHY1415S

Product Information

Description:	Rabbit polyclonal antibody
Background:	AHP1 is one of the six <i>Arabidopsis thaliana</i> histidine phosphotransfer proteins (AHPs). AHPs function as redundant positive regulators of cytokinin signaling. Members of the AHP gene family include: AT3G21510 (AHP1), AT3G29350 (AHP2), AT5G39340 (AHP3), AT3G16360 (AHP4), AT1G03430 (AHP5) and AT1G80100 (AHP6).
Synonyms:	AHP1, HISTIDINE-CONTAINING PHOSPHOTRANSMITTER 1
Immunogen:	KLH-conjugated synthetic peptide (14 aa from N terminal section) derived from <i>Arabidopsis thaliana</i> AHP1 (AT3G21510).
Form:	Lyophilized
Quantity:	150 µg
Purification:	Serum Peptide affinity form antibody available upon request at info@phytoab.com .
Reconstitution:	Reconstitution with 150µl of sterile water. "Note: please spin tube briefly prior to opening it to avoid any losses that might occur from lyophilized material adhering to the cap or sides of the tube".
Stability & Storage:	Use a manual defrost freezer and avoid repeated freeze-thaw cycles. 12 months from date of receipt, -20 to -70°C as supplied. 6 months, -20 to -70°C under sterile conditions after reconstitution. 1 month, 2 to 8°C under sterile conditions after reconstitution.
Shipping:	The product is shipped at 4°C. Upon receipt, store it immediately at the temperature recommended above.

Application Information

Recommended Dilution:	Western Blot (1:1000-1:2000) Note: Optimal dilutions/concentrations should be determined by the end user.
Expected / apparent MW:	18 kDa

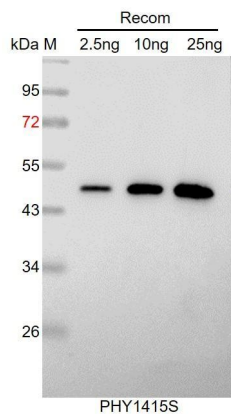
Research Use Only

Predicted Reactivity:

Among species analyzed, the sequence of the synthetic peptide used for immunization is 100% homologues with the sequence in *Brassica napus*, *Brassica rapa*, and 80-99% homologues with the sequence in *Glycine max*, *Gossypium raimondii*, *Vitis vinifera*, *Populus trichocarpa*, *Nicotiana tabacum*, *Solanum lycopersicum*, *Solanum tuberosum*.

For more species homologues information, please contact tech support at tech@phytoab.com.

Application Example



Recom: 2.5 ng, 10 ng and 25 ng recombinant protein containing the peptide for immunization and having a molecular mass of 48 kDa.

Electrophoresis: 12% SDS-PAGE

Transfer: blotting to NC (nitrocellulose) membrane for 1 h.

← **Blocking:** 5% skim milk at RT or 4°C for 1 h.

Primary antibody: 1:1000 dilution overnight at 4°C.

Secondary antibody: 1:10000 dilution using Goat Anti-Rabbit IgG H&L (HRP) (Cat# PHY6000).

Detection: using chemiluminescence substrate and image were captured with CCD camera.