

Anti-Ubiquitin antibody

Catalog: PHY0076A

Product Information

| | |
|---------------------------------|--|
| Description: | Rabbit polyclonal antibody |
| Background: | Ubiquitin is a small, highly conserved protein found in all eukaryotes. Within the cell, ubiquitin is covalently linked to substrate proteins, often targeting them for degradation via the ubiquitin pathway. |
| Synonyms: | Ubiquitin |
| Immunogen: | KLH-conjugated synthetic peptide (18 aa from Central section) derived from <i>Arabidopsis thaliana</i> UBQ2 (AT2G36170), UBQ1 (AT3G52590), UBQ7 (AT2G35635), UBQ6 (AT2G47110), UBQ5 (AT3G62250), UBQ14 (AT4G02890), UBQ11 (AT4G05050), UBQ3 (AT5G03240), UBQ13 (AT1G65350), UBQ9 (AT5G37640), UBQ10 (AT4G05320), UBQ4 (AT5G20620), UBQ12 (AT1G55060), UBQ8 (AT3G09790), RUB1 (AT1G31340), RPS27aA (AT1G23410). |
| Form: | Lyophilized |
| Quantity: | 150 µg |
| Purification: | Immunogen affinity purified |
| Reconstitution: | Reconstitution with 150 µl of sterile 1XPBS (PH=7.4). "Note: please spin tube briefly prior to opening it to avoid any losses that might occur from lyophilized material adhering to the cap or sides of the tube". |
| Stability & Storage: | Use a manual defrost freezer and avoid repeated freeze-thaw cycles. 12 months from date of receipt, -20 to -70°C as supplied. 6 months, -20 to -70°C under sterile conditions after reconstitution. 1 month, 2 to 8°C under sterile conditions after reconstitution. |
| Shipping: | The product is shipped at 4°C. Upon receipt, store it immediately at the temperature recommended above. |

Application Information

| | |
|--------------------------------|--|
| Recommended Dilution: | Western Blot (1:1000-1:2000) Note: Optimal dilutions/concentrations should be determined by the end user. |
| Expected / apparent MW: | 15 kDa |

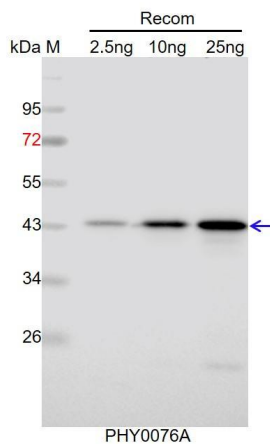
Research Use Only

Predicted Reactivity:

Among species analyzed, the sequence of the synthetic peptide used for immunization is 100% homologues with the sequence in *Vitis vinifera*, *Solanum tuberosum*, *Solanum lycopersicum*, *Oryza sativa*, *Triticum aestivum*, *Zea mays*, *Brassica napus*, *Medicago truncatula*, *Populus trichocarpa*, *Brassica rapa*, *Glycine max*, *Sorghum bicolor*, *Gossypium raimondii*, *Chlamydomonas reinhardtii*, *Nicotiana tabacum*, *Panicum virgatum*, *Spinacia oleracea*, *Setaria viridis*, *Hordeum vulgare*.

For more species homologues information, please contact tech support at tech@phytoab.com.

Application Example



Recom: 2.5 ng, 10 ng and 25 ng recombinant protein containing the peptide for immunization and having a molecular mass of 44 kDa.

Electrophoresis: 12% SDS-PAGE

Transfer: blotting to NC (nitrocellulose) membrane for 1 h.

Blocking: 5% skim milk at RT or 4°C for 1 h.

Primary antibody: 1:1000 dilution overnight at 4°C.

Secondary antibody: 1:10000 dilution using Goat Anti-Rabbit IgG H&L (HRP) (Cat# PHY6000).

Detection: using chemiluminescence substrate and image were captured with CCD camera.