

Anti-BRI1-associated receptor kinase, C-terminal antibody

Catalog: PHY0723A

Product Information

Description:	Rabbit polyclonal antibody
Background:	BAK1, as a co-receptor of BRI1 (AT4G39400) that mediates brassinosteroids (BR) signaling, the functional roles of BAK1, as a versatile co-receptor for various ligand-binding leucine-rich repeat (LRR)-containing receptor-like kinase (RLKs), are being extended to involvement with plant immunity, cell death, stomatal development and ABA signaling in plants.
Synonyms:	BAK1, ATBAK1, ATSERK3, BRI1-ASSOCIATED RECEPTOR KINASE, ELG, ELONGATED, RECEPTOR KINASES LIKE SERK 10, RKS10, SERK3, SOMATIC EMBRYOGENESIS RECEPTOR-LIKE KINASE 3
Immunogen:	KLH-conjugated synthetic peptide (15 aa from C terminal section) derived from <i>Arabidopsis thaliana</i> BAK1 (AT4G33430).
Form:	Lyophilized
Quantity:	150 µg
Purification:	Immunogen affinity purified
Reconstitution:	Reconstitution with 150 µl of sterile 1XPBS (PH=7.4). "Note: please spin tube briefly prior to opening it to avoid any losses that might occur from lyophilized material adhering to the cap or sides of the tube".
Stability & Storage:	Use a manual defrost freezer and avoid repeated freeze-thaw cycles. 12 months from date of receipt, -20 to -70°C as supplied. 6 months, -20 to -70°C under sterile conditions after reconstitution. 1 month, 2 to 8°C under sterile conditions after reconstitution.
Shipping:	The product is shipped at 4°C. Upon receipt, store it immediately at the temperature recommended above.

Application Information

Recommended Dilution:	Western Blot (1:1000-1:2000) Note: Optimal dilutions/concentrations should be determined by the end user.
Expected / apparent MW:	74 kDa

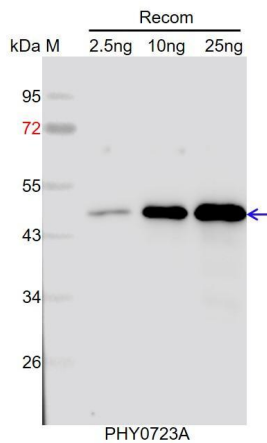
Research Use Only

Predicted Reactivity:

Among species analyzed, the sequence of the synthetic peptide used for immunization is 80-99% homologues with the sequence in *Brassica napus*, *Brassica rapa*.

For more species homologues information, please contact tech support at tech@phytoab.com.

Application Example



Recom: 2.5 ng, 10 ng and 25 ng recombinant protein containing the peptide for immunization and having a molecular mass of 48 kDa.

Electrophoresis: 12% SDS-PAGE

Transfer: blotting to NC (nitrocellulose) membrane for 1 h.

Blocking: 5% skim milk at RT or 4°C for 1 h.

Primary antibody: 1:1000 dilution overnight at 4°C.

Secondary antibody: 1:10000 dilution using Goat Anti-Rabbit IgG H&L (HRP) (Cat# PHY6000).

Detection: using chemiluminescence substrate and image were captured with CCD camera.