

# Anti-Histone H3-like centromeric protein CENH3, N-terminal antibody

Catalog: PHY7784S

## Product Information

<b>Description:</b>	Rabbit polyclonal antibody
<b>Background:</b>	Histone H3-like variant exclusively replaces conventional H3 in the nucleosome core of centromeric chromatin at the inner plate of the kinetochore. It is required for recruitment and assembly of kinetochore proteins, mitotic progression and chromosome segregation. And it may serve as an epigenetic mark that propagates centromere identity through replication and cell division.
<b>Synonyms:</b>	CENH3, CENTROMERIC HISTONE H3, HTR12
<b>Immunogen:</b>	KLH-conjugated synthetic peptide (15 aa from N terminal section) derived from <i>Arabidopsis thaliana</i> CENH3 (AT1G01370).
<b>Form:</b>	Lyophilized
<b>Quantity:</b>	150 µg
<b>Purification:</b>	Serum Peptide affinity form antibody available upon request at <a href="mailto:info@phytoab.com">info@phytoab.com</a> .
<b>Reconstitution:</b>	Reconstitution with 150µl of sterile water. "Note: please spin tube briefly prior to opening it to avoid any losses that might occur from lyophilized material adhering to the cap or sides of the tube".
<b>Stability &amp; Storage:</b>	Use a manual defrost freezer and avoid repeated freeze-thaw cycles. 12 months from date of receipt, -20 to -70°C as supplied. 6 months, -20 to -70°C under sterile conditions after reconstitution. 1 month, 2 to 8°C under sterile conditions after reconstitution.
<b>Shipping:</b>	The product is shipped at 4°C. Upon receipt, store it immediately at the temperature recommended above.

## Application Information

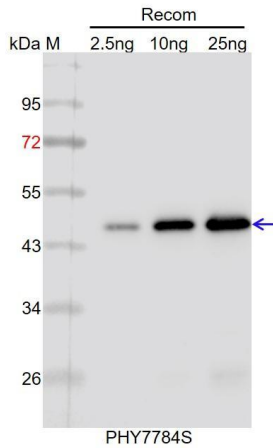
<b>Recommended Dilution:</b>	Western Blot (1:1000-1:2000) Note: Optimal dilutions/concentrations should be determined by the end user.
<b>Expected / apparent MW:</b>	20 kDa

Research Use Only

**Predicted Reactivity:**

For more species homologues information, please contact tech support at [tech@phytoab.com](mailto:tech@phytoab.com).

**Application Example**



**Recom:** 2.5 ng, 10 ng and 25 ng recombinant protein containing the peptide for immunization and having a molecular mass of 48 kDa.

**Electrophoresis:** 12% SDS-PAGE

**Transfer:** blotting to NC (nitrocellulose) membrane for 1 h.

**Blocking:** 5% skim milk at RT or 4°C for 1 h.

**Primary antibody:** 1:1000 dilution overnight at 4°C.

**Secondary antibody:** 1:10000 dilution using Goat Anti-Rabbit IgG H&L (HRP) (Cat# PHY6000).

**Detection:** using chemiluminescence substrate and image were captured with CCD camera.