

# Anti-Protein COFACTOR ASSEMBLY OF COMPLEX C SUBUNIT B CCB2, chloroplastic antibody

Catalog: PHY2902S

## Product Information

|                        |  |
|------------------------|--|
| <b>Description:</b>    | Rabbit polyclonal antibody   |
| <b>Background:</b>     | HCF208 is required for the biogenesis and accumulation of native cytochrome b6 in the thylakoid membrane. Controls the conversion of apocytochrome b6 to holocytochrome b6. Required for covalent binding of the c-type heme to cytochrome b6. |
| <b>Synonyms:</b>       | HCF208, CCB2, COFACTOR ASSEMBLY OF COMPLEX C, HIGH CHLOROPHYLL FLUORESCENCE 208  |
| <b>Immunogen:</b>      | KLH-conjugated synthetic peptide (16 aa from Central section) derived from <i>Arabidopsis thaliana</i> HCF208 (AT5G52110).   |
| <b>Form:</b>           | Lyophilized  |
| <b>Quantity:</b>       | 150 µg   |
| <b>Purification:</b>   | Serum<br>Peptide affinity form antibody available upon request at <a href="mailto:info@phytoab.com">info@phytoab.com</a> .   |
| <b>Reconstitution:</b> | Reconstitution with 150 µl of sterile water.<br>"Note: please spin tube briefly prior to opening it to avoid any losses that might occur from lyophilized material adhering to the cap or sides of the tube".                                  |
| <b>Stability &amp;</b> | Use a manual defrost freezer and avoid repeated freeze-thaw cycles.  |
| <b>Storage:</b>        | 12 months from date of receipt, -20 to -70°C as supplied.<br>6 months, -20 to -70°C under sterile conditions after reconstitution.<br>1 month, 2 to 8°C under sterile conditions after reconstitution.   |
| <b>Shipping:</b>       | The product is shipped at 4°C. Upon receipt, store it immediately at the temperature recommended above.  |

## Application Information

|                                |  |
|--------------------------------|--|
| <b>Recommended Dilution:</b>   | Western Blot (1:1000-1:2000)<br>Note: Optimal dilutions/concentrations should be determined by the end user. |
| <b>Expected / apparent MW:</b> | 31 kDa   |

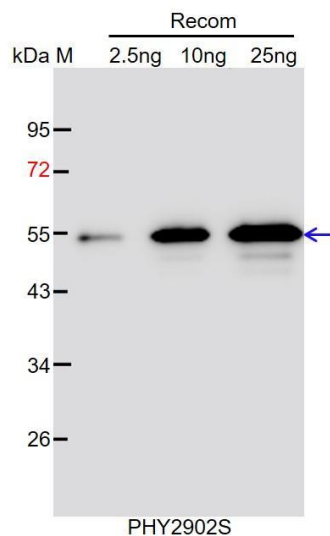
Research Use Only

**Predicted Reactivity:**

Among species analyzed, the sequence of the synthetic peptide used for immunization is 80-99% homologues with the sequence in *Solanum tuberosum*, *Solanum lycopersicum*, *Brassica napus*, *Brassica rapa*.

For more species homologues information, please contact tech support at [tech@phytoab.com](mailto:tech@phytoab.com).

**Application Example**



Recom: 2.5 ng, 10 ng and 25 ng recombinant protein containing the peptide for immunization and having a molecular mass of 53 kDa.

**Electrophoresis:** 12% SDS-PAGE

**Transfer:** blotting to NC (nitrocellulose) membrane for 1 h.

**Blocking:** 5% skim milk at RT or 4°C for 1 h.

**Primary antibody:** 1:1000 dilution overnight at 4°C.

**Secondary antibody:** 1:10000 dilution using Goat Anti-Rabbit IgG H&L (HRP) (Cat# PHY6000).

**Detection:** using chemiluminescence substrate and image were captured with CCD camera.