

Anti-Short-chain dehydrogenase TIC32, chloroplastic antibody

Catalog: PHY1372S

Product Information

Description:	Rabbit polyclonal antibody
Background:	TIC32 is a member of NAD(P)-binding Rossmann-fold superfamily protein, it is involved in protein precursor import into chloroplasts.
Synonyms:	TIC32, ATTIC32-IVA, TIC32-IVA, TRANSLOCON AT THE INNER ENVELOPE MEMBRANE OF CHLOROPLASTS 32-IVA.
Immunogen:	KLH-conjugated synthetic peptide of TIC32 derived from <i>Arabidopsis thaliana</i> AT4G23430.
Form:	Lyophilized
Quantity:	150 µg
Purification:	Serum Peptide affinity form antibody available upon request at info@phytoab.com .
Reconstitution:	Reconstitution with 150 µl of sterile water. "Note: please spin tube briefly prior to opening it to avoid any losses that might occur from lyophilized material adhering to the cap or sides of the tube".
Stability & Storage:	Use a manual defrost freezer and avoid repeated freeze-thaw cycles. 12 months from date of receipt, -20 to -70°C as supplied. 6 months, -20 to -70°C under sterile conditions after reconstitution. 1 month, 2 to 8°C under sterile conditions after reconstitution.
Shipping:	The product is shipped at 4°C. Upon receipt, store it immediately at the temperature recommended above.

Application Information

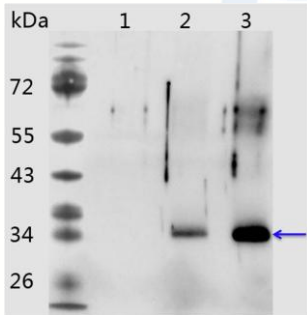
Recommended Dilution:	Western Blot (1:1000-1:2000) Note: Optimal dilutions/concentrations should be determined by the end user.
Expected/apparent MW:	34 kDa (<i>Arabidopsis thaliana</i>), 36 kDa (recombinant protein)
Confirmed Reactivity:	<i>Arabidopsis thaliana</i>
Predicted Reactivity:	Among species analyzed, the sequence of the synthetic peptide used for immunization is 100% homologues with the sequence in <i>Brassica</i>

Research Use Only

napus, *Brassica rapa*.

For more species homologues information, please contact tech support at tech@phytoab.com.

Application Example



Lane 1: 1 ng recombinant protein of TIC32.

Lane 2: 10 ng recombinant protein of TIC32.

Lane 3: 50 ng recombinant protein of TIC32.

Electrophoresis: 15% SDS-Urea-PAGE

Transfer: blotting to NC (nitrocellulose) membrane for 1 h.

Blocking: 5% skim milk at RT or 4°C for 1 h.

PHY1372S

Primary antibody: 1:1000 dilution overnight at 4°C.

Secondary antibody: 1:10000 dilution using Goat Anti-Rabbit IgG H&L (HRP) (Cat# PHY6000)

Detection: using chemiluminescence substrate and image were captured with CCD camera.