

Anti-Photosystem II protein D1, C-terminal antibody

Catalog: PHY5707S

Product Information

Description:	Rabbit polyclonal antibody
Background:	PsbA
Synonyms:	PsbA, D1, psbA
Immunogen:	KLH-conjugated synthetic peptide (16 aa from C terminal section) derived from <i>Chlamydomonas reinhardtii</i> PsbA (CreCp.g802285 and CreCp.g802321).
Form:	Lyophilized
Quantity:	150 µg
Purification:	Serum Peptide affinity form antibody available upon request at info@phytoab.com .
Reconstitution:	Reconstitution with 150 µl of sterile water. "Note: please spin tube briefly prior to opening it to avoid any losses that might occur from lyophilized material adhering to the cap or sides of the tube".
Stability & Storage:	Use a manual defrost freezer and avoid repeated freeze-thaw cycles. 12 months from date of receipt, -20 to -70°C as supplied. 6 months, -20 to -70°C under sterile conditions after reconstitution. 1 month, 2 to 8°C under sterile conditions after reconstitution.
Shipping:	The product is shipped at 4°C. Upon receipt, store it immediately at the temperature recommended above.

Application Information

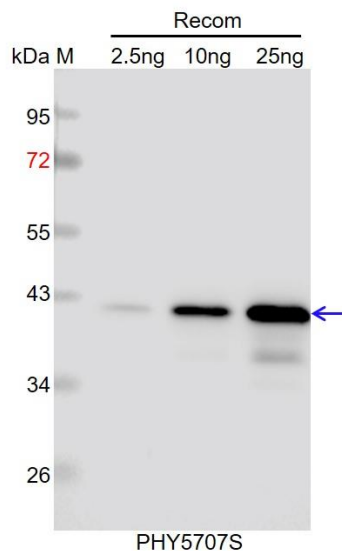
Recommended Dilution:	Western Blot (1:1000-1:2000) Note: Optimal dilutions/concentrations should be determined by the end user.
Expected / apparent MW:	39 kDa
Predicted Reactivity:	Among species analyzed, the sequence of the synthetic peptide used for immunization is 100% homologues with the sequence in <i>Oryza sativa</i> , <i>Synechococcus elongatus</i> PCC 7942, <i>Vitis vinifera</i> , <i>Gossypium raimondii</i> , <i>Triticum aestivum</i> , <i>Synechocystis</i> sp. PCC 6803, <i>Glycine max</i> , <i>Brassica napus</i> , <i>Zea mays</i> , <i>Arabidopsis thaliana</i> , <i>Nicotiana</i>

Research Use Only

tabacum, Medicago truncatula, Solanum tuberosum, Hordeum vulgare, Brassica rapa, Populus trichocarpa, Cucumis sativus, Panicum virgatum, Populus trichocarpa, Spinacia oleracea, Setaria viridis.

For more species homologues information, please contact tech support at tech@phytoab.com.

Application Example



Recom: 2.5 ng, 10 ng and 25 ng recombinant protein containing the peptide for immunization and having a molecular mass of 41 kDa.

Electrophoresis: 12% SDS-PAGE

Transfer: blotting to NC (nitrocellulose) membrane for 1 h.

Blocking: 5% skim milk at RT or 4°C for 1 h.

Primary antibody: 1:1000 dilution overnight at 4°C.

Secondary antibody: 1:10000 dilution using Goat Anti-Rabbit IgG H&L (HRP) (Cat# PHY6000).

Detection: using chemiluminescence substrate and image were captured with CCD camera.