

Anti-20S proteasome β subunit 1, C-terminal antibody

Catalog: PHY2479S

Product Information

Description:	Rabbit polyclonal antibody
Background:	The plant 20S proteasome β subunit 1 (PBA1) was shown to have caspase-3-like activity using biotin-DEVD-fmk pull-down and activity assay in downregulated lines.
Synonyms:	PBA1
Immunogen:	KLH-conjugated synthetic peptide (17 aa from C terminal section) derived from <i>Arabidopsis thaliana</i> PBA1 (AT4G31300).
Form:	Lyophilized
Quantity:	150 μ g
Purification:	Serum
Reconstitution:	Peptide affinity form antibody available upon request at info@phytoab.com . Reconstitution with 150 μ l of sterile water. "Note: please spin tube briefly prior to opening it to avoid any losses that might occur from lyophilized material adhering to the cap or sides of the tube".
Stability & Storage:	Use a manual defrost freezer and avoid repeated freeze-thaw cycles. 12 months from date of receipt, -20 to -70 $^{\circ}$ C as supplied. 6 months, -20 to -70 $^{\circ}$ C under sterile conditions after reconstitution. 1 month, 2 to 8 $^{\circ}$ C under sterile conditions after reconstitution.
Shipping:	The product is shipped at 4 $^{\circ}$ C. Upon receipt, store it immediately at the temperature recommended above.

Application Information

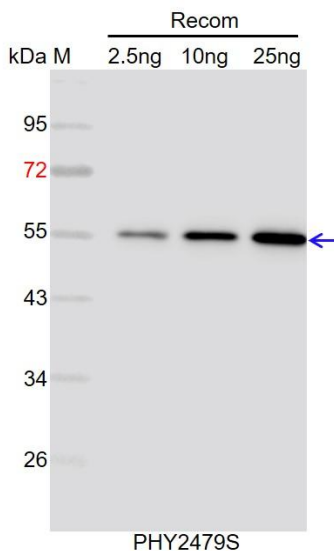
Recommended Dilution:	Western Blot (1:1000-1:5000) Note: Optimal dilutions/concentrations should be determined by the end user.
Expected / apparent MW:	25 kDa
Predicted Reactivity:	Among species analyzed, the sequence of the synthetic peptide used for immunization is 100% homologues with the sequence in <i>Brassica rapa</i> , <i>Brassica napus</i> , <i>Oryza sativa</i> , <i>Gossypium raimondii</i> , and 80-99%

Research Use Only

homologues with the sequence in *Panicum virgatum*, *Zea mays*, *Triticum aestivum*, *Hordeum vulgare*, *Spinacia oleracea*, *Vitis vinifera*, *Setaria viridis*, *Nicotiana tabacum*, *Cucumis sativus*, *Populus trichocarpa*.

For more species homologues information, please contact tech support at tech@phytoab.com.

Application Example



Recom: 2.5 ng, 10 ng and 25 ng recombinant protein containing the peptide for immunization and having a molecular mass of 55 kDa.

Electrophoresis: 12% SDS-PAGE

Transfer: blotting to NC (nitrocellulose) membrane for 1 h.

Blocking: 5% skim milk at RT or 4°C for 1 h.

Primary antibody: 1:1000 dilution overnight at 4°C.

Secondary antibody: 1:10000 dilution using Goat Anti-Rabbit IgG H&L (HRP) (Cat# PHY6000).

Detection: using chemiluminescence substrate and image were captured with CCD camera.