

Anti-Glyceraldehyde-3-phosphate dehydrogenase GAPA/B, chloroplastic antibody

Catalog: PHY3983S

Product Information

Description:	Rabbit polyclonal antibody
Background:	GAPA1 is involved in the photosynthetic reductive pentose phosphate pathway. It catalyzes the reduction of 1,3-diphosphoglycerate by NADPH.
Synonyms:	GAPA/B
Immunogen:	KLH-conjugated synthetic peptide (16 aa from Central section) derived from <i>Arabidopsis thaliana</i> GAPA1 (AT3G26650), GAPA2 (AT1G12900), GAPB (AT1G42970).
Form:	Lyophilized
Quantity:	150 µg
Purification:	Serum Peptide affinity form antibody available upon request at info@phytoab.com .
Reconstitution:	Reconstitution with 150 µl of sterile water. "Note: please spin tube briefly prior to opening it to avoid any losses that might occur from lyophilized material adhering to the cap or sides of the tube".
Stability & Storage:	Use a manual defrost freezer and avoid repeated freeze-thaw cycles. 12 months from date of receipt, -20 to -70°C as supplied. 6 months, -20 to -70°C under sterile conditions after reconstitution. 1 month, 2 to 8°C under sterile conditions after reconstitution.
Shipping:	The product is shipped at 4°C. Upon receipt, store it immediately at the temperature recommended above.

Application Information

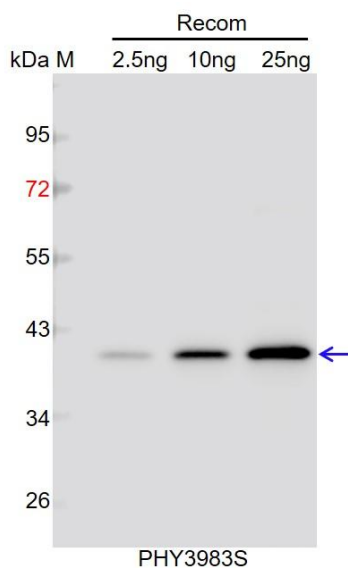
Recommended Dilution:	Western Blot (1:1000-1:2000) Note: Optimal dilutions/concentrations should be determined by the end user.
Expected / apparent MW:	GAPA1/2 (42 / 38) kDa, GAPB 48 kDa
Predicted Reactivity:	Among species analyzed, the sequence of the synthetic peptide used for immunization is 100% homologues with the sequence in <i>Chlamydomonas reinhardtii</i> , <i>Solanum tuberosum</i> , <i>Glycine max</i> ,

Research Use Only

Solanum lycopersicum, Gossypium raimondii, Vitis vinifera, Cucumis sativus, Populus trichocarpa, Medicago truncatula, Spinacia oleracea, Nicotiana tabacum, Zea mays, Brassica napus, Brassica rapa, Setaria viridis, Panicum virgatum, Hordeum vulgare, Sorghum bicolor, Oryza sativa.

For more species homologues information, please contact tech support at tech@phytoab.com.

Application Example



Recom: 2.5 ng, 10 ng and 25 ng recombinant protein containing the peptide for immunization and having a molecular mass of 41 kDa.

Electrophoresis: 12% SDS-PAGE

Transfer: blotting to NC (nitrocellulose) membrane for 1 h.

Blocking: 5% skim milk at RT or 4°C for 1 h.

Primary antibody: 1:1000 dilution overnight at 4°C.

Secondary antibody: 1:10000 dilution using Goat Anti-Rabbit IgG H&L (HRP) (Cat# PHY6000).

Detection: using chemiluminescence substrate and image were captured with CCD camera.