

# Anti-RELATED TO UBIQUITIN 1/2 antibody

Catalog: PHY0755A

## Product Information

|                                 |   |
|---------------------------------|---|
| <b>Description:</b>             | Rabbit polyclonal antibody  |
| <b>Background:</b>              | RUB1 (AT1G31340) and RUB2 (AT2G35635) are redundant and both proteins are essential for early embryonic cell divisions. In addition, RUB3 (AT1G11980) may function as a stable post-translational protein modifier.   |
| <b>Synonyms:</b>                | RUB1/2, RELATED TO UBIQUITIN 1/2  |
| <b>Immunogen:</b>               | KLH-conjugated synthetic peptide (15 aa from C terminal section) derived from <i>Arabidopsis thaliana</i> of RUB1 (AT1G31340) and RUB2 (AT2G35635).   |
| <b>Form:</b>                    | Lyophilized   |
| <b>Quantity:</b>                | 150 µg  |
| <b>Purification:</b>            | Immunogen affinity purified   |
| <b>Reconstitution:</b>          | Reconstitution with 150 µl of sterile 1XPBS (PH=7.4).<br>"Note: please spin tube briefly prior to opening it to avoid any losses that might occur from lyophilized material adhering to the cap or sides of the tube".  |
| <b>Stability &amp; Storage:</b> | Use a manual defrost freezer and avoid repeated freeze-thaw cycles.<br>12 months from date of receipt, -20 to -70°C as supplied.<br>6 months, -20 to -70°C under sterile conditions after reconstitution.<br>1 month, 2 to 8°C under sterile conditions after reconstitution. |
| <b>Shipping:</b>                | The product is shipped at 4°C. Upon receipt, store it immediately at the temperature recommended above.   |

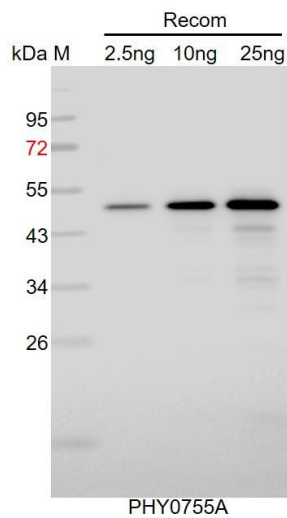
## Application Information

|                                |  |
|--------------------------------|--|
| <b>Recommended Dilution:</b>   | Western Blot (1:1000-1:2000)<br>Note: Optimal dilutions/concentrations should be determined by the end user.   |
| <b>Expected / apparent MW:</b> | 17 kDa   |
| <b>Predicted Reactivity:</b>   | Among species analyzed, the sequence of the synthetic peptide used for immunization is 100% homologous with the sequence in <i>Solanum tuberosum</i> , <i>Gossypium raimondii</i> , <i>Hordeum vulgare</i> , <i>Oryza sativa</i> , <i>Zea mays</i> , <i>Medicago truncatula</i> , <i>Triticum aestivum</i> , <i>Brassica napus</i> , |

Research Use Only

*Panicum virgatum*, *Spinacia oleracea*, *Brassica rapa*, *Vitis vinifera*, *Populus trichocarpa*, *Nicotiana tabacum*, *Glycine max*, *Cucumis sativus*, *Solanum lycopersicum*, *Setaria viridis*, and 80-99% homologues with the sequence in *Chlamydomonas reinhardtii*. The sequence of the synthetic peptide used for immunization is 87% (13 / 15) homologues with the sequence in RUB3 (AT1G11980). For more species homologues information, please contact tech support at [tech@phytoab.com](mailto:tech@phytoab.com).

## Application Example



Recom: 2.5 ng, 10 ng and 25 ng recombinant protein containing the peptide for immunization and having a molecular mass of 47 kDa.

**Electrophoresis:** 12% SDS-PAGE

**Transfer:** blotting to NC (nitrocellulose) membrane for 1 h.

**Blocking:** 5% skim milk at RT or 4°C for 1 h.

**Primary antibody:** 1:1000 dilution overnight at 4°C.

**Secondary antibody:** 1:10000 dilution using Goat Anti-Rabbit IgG H&L (HRP) (Cat# PHY6000).

**Detection:** using chemiluminescence substrate and image were captured with CCD camera.