

# Anti-Ethylene-responsive transcription factor ERF109, N-terminal antibody

Catalog: PHY7619S

## Product Information

<b>Description:</b>	Rabbit polyclonal antibody
<b>Background:</b>	RRTF1 is a member of the ERF (ethylene response factor) subfamily B-3 of ERF/AP2 transcription factor family. The protein contains one AP2 domain. There are 18 members in this subfamily including ATERF-1, ATERF-2, AND ATERF-5. Regulates programmed cell death (PCD) inhibitor genes. Involved in retarding programmed cell death under salt stress due to the regulation of processes participating in ROS inhibition. ERF-regulated transcripts belong to the tryptophan biosynthesis, tryptophan metabolism, and downstream plant hormone signal transduction pathways, where ERF109 potentially acts as a 'master switch' mediator of a cascade of consecutive events across the three pathways, promoting plant growth and re-adjustment to homeostasis due the direct participation in auxin biosynthesis leading to the plants ability to tolerate salt stress.
<b>Synonyms:</b>	RRTF1, ERF109, ETHYLENE RESPONSE FACTOR 109, REDOX RESPONSIVE TRANSCRIPTION FACTOR 1
<b>Immunogen:</b>	KLH-conjugated synthetic peptide (20 aa from N terminal section) derived from <i>Arabidopsis thaliana</i> RRTF1 (AT4G34410).
<b>Form:</b>	Lyophilized
<b>Quantity:</b>	150 µg
<b>Purification:</b>	Serum Peptide affinity form antibody available upon request at <a href="mailto:info@phytoab.com">info@phytoab.com</a> .
<b>Reconstitution:</b>	Reconstitution with 150 µl of sterile water. "Note: please spin tube briefly prior to opening it to avoid any losses that might occur from lyophilized material adhering to the cap or sides of the tube".
<b>Stability &amp; Storage:</b>	Use a manual defrost freezer and avoid repeated freeze-thaw cycles. 12 months from date of receipt, -20 to -70°C as supplied. 6 months, -20 to -70°C under sterile conditions after reconstitution. 1 month, 2 to 8°C under sterile conditions after reconstitution.
<b>Shipping:</b>	The product is shipped at 4°C. Upon receipt, store it immediately at the

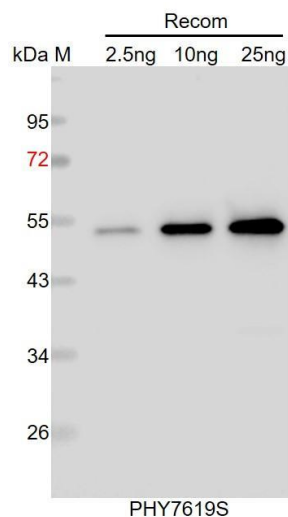
Research Use Only

temperature recommended above.

## Application Information

<b>Recommended Dilution:</b>	Western Blot (1:1000-1:2000)
	Note: Optimal dilutions/concentrations should be determined by the end user.
<b>Expected / apparent MW:</b>	29 kDa
<b>Predicted Reactivity:</b>	For more species homologues information, please contact tech support at <a href="mailto:tech@phytoab.com">tech@phytoab.com</a> .

## Application Example



Recom: 2.5 ng, 10 ng and 25 ng recombinant protein containing the peptide for immunization and having a molecular mass of 53 kDa.

**Electrophoresis:** 12% SDS-PAGE

**Transfer:** blotting to NC (nitrocellulose) membrane for 1 h.

**Blocking:** 5% skim milk at RT or 4°C for 1 h.

**Primary antibody:** 1:1000 dilution overnight at 4°C.

**Secondary antibody:** 1:10000 dilution using Goat Anti-Rabbit IgG H&L (HRP) (Cat# PHY6000).

**Detection:** using chemiluminescence substrate and image were captured with CCD camera.