

Anti-Protein DJ-1 homolog C antibody

Catalog: PHY3777A

Product Information

Description:	Rabbit polyclonal antibody
Background:	DJ1C is a homolog of animal DJ-1 superfamily protein. In the <i>A. thaliana</i> genome, three genes encoding close homologs of human DJ-1 were identified AT3G14990 (DJ1A), AT1G53280 (DJ1B) and AT4G34020 (DJ1C).
Synonyms:	DJ1C, ATDJ1C, DJ-1 HOMOLOG C, DJ-1C
Immunogen:	KLH-conjugated synthetic peptide (15 aa from Central section) derived from <i>Arabidopsis thaliana</i> DJ1C (AT4G34020).
Form:	Lyophilized
Quantity:	150 µg
Purification:	Immunogen affinity purified
Reconstitution:	Reconstitution with 150 µl of sterile 1XPBS (PH=7.4). "Note: please spin tube briefly prior to opening it to avoid any losses that might occur from lyophilized material adhering to the cap or sides of the tube".
Stability & Storage:	Use a manual defrost freezer and avoid repeated freeze-thaw cycles. 12 months from date of receipt, -20 to -70°C as supplied. 6 months, -20 to -70°C under sterile conditions after reconstitution. 1 month, 2 to 8°C under sterile conditions after reconstitution.
Shipping:	The product is shipped at 4°C. Upon receipt, store it immediately at the temperature recommended above.

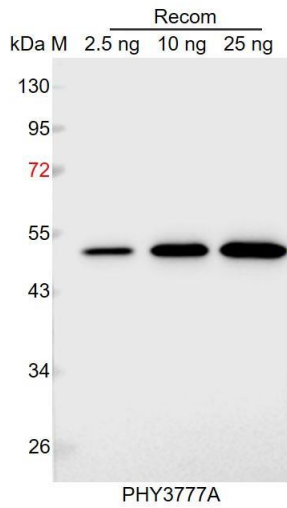
Application Information

Recommended Dilution:	Western Blot (1:1000-1:5000) Note: Optimal dilutions/concentrations should be determined by the end user.
Expected / apparent MW:	51 kDa
Predicted Reactivity:	Among analyzed species, the sequence of the synthetic peptide used for immunization is 100% homologues with the sequence in <i>Brassica napus</i> , and 80-99% homologues with the sequence in <i>Brassica rapa</i> . For more species homologues information, please contact tech

Research Use Only

support at tech@phytoab.com.

Application Example



Recom: 2.5 ng, 10 ng and 25 ng recombinant protein containing the peptide for immunization and having a molecular mass of 50 kDa.

Electrophoresis: 12% SDS-PAGE

Transfer: blotting to NC (nitrocellulose) membrane for 1 h.

Blocking: 5% skim milk at RT or 4°C for 1 h.

Primary antibody: 1:1000 dilution overnight at 4°C.

Secondary antibody: 1:10000 dilution using Goat Anti-Rabbit IgG H&L (HRP) (Cat# PHY6000).

Detection: using chemiluminescence substrate and image were captured with CCD camera.