

Anti-26S proteasome non-ATPase regulatory subunit 2 homolog A/B antibody

Catalog: PHY2594A

Product Information

Description:	Rabbit polyclonal antibody
Background:	The 26S proteasome plays a central role in the degradation of regulatory proteins involved in a variety of developmental processes. It consists of two multisubunit protein complexes: the proteolytic core protease and the regulatory particle (RP). The RPN1 subunit belongs to the base complex of the RP and is known to physically interact with two proteins carrying ubiquitin-like domains, Rad23 and Dsk2.
Synonyms:	RPN1A / B, 26S PROTEASOME REGULATORY SUBUNIT S2 1A / B, ATRPN1A / B
Immunogen:	KLH-conjugated synthetic peptide (16 aa from Central section) derived from <i>Arabidopsis thaliana</i> RPN1A (AT2G20580) and RPN1B (AT4G28470).
Form:	Lyophilized
Quantity:	150 µg
Purification:	Immunogen affinity purified.
Reconstitution:	Reconstitution with 150 µl of sterile 1XPBS (PH=7.4). "Note: please spin tube briefly prior to opening it to avoid any losses that might occur from lyophilized material adhering to the cap or sides of the tube".
Stability & Storage:	Use a manual defrost freezer and avoid repeated freeze-thaw cycles. 12 months from date of receipt, -20 to -70°C as supplied. 6 months, -20 to -70°C under sterile conditions after reconstitution. 1 month, 2 to 8°C under sterile conditions after reconstitution.
Shipping:	The product is shipped at 4°C. Upon receipt, store it immediately at the temperature recommended above.

Application Information

Recommended Dilution:	Western Blot(1:1000-1:5000) Note: Optimal dilutions/concentrations should be determined by the end user.
Expected / apparent MW:	98 kDa

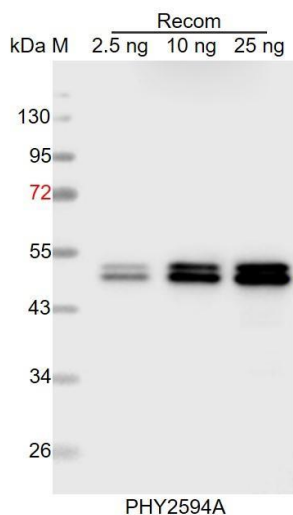
Research Use Only

Predicted Reactivity:

Among species analyzed, the sequence of the synthetic peptide used for immunization is 100% homologues with the sequence in *Zea mays*, *Brassica rapa*, *Vitis vinifera*, *Oryza sativa*, *Glycine max*, *Triticum aestivum*, *Nicotiana tabacum*, *Hordeum vulgare*, *Panicum virgatum*, *Solanum tuberosum*, *Solanum lycopersicum*, *Cucumis sativus*, *Spinacia oleracea*, *Sorghum bicolor*, *Brassica napus*, *Setaria viridis*, *Populus trichocarpa*, *Medicago truncatula*.

For more species homologues information, please contact tech support at tech@phytoab.com.

Application Example



Recom: 2.5 ng, 10 ng and 25 ng recombinant protein containing the peptide for immunization and having a molecular mass of 47 kDa.

Electrophoresis: 12% SDS-PAGE

Transfer: blotting to NC (nitrocellulose) membrane for 1 h.

Blocking: 5% skim milk at RT or 4°C for 1 h.

Primary antibody: 1:1000 dilution overnight at 4°C.

Secondary antibody: 1:10000 dilution using Goat Anti-Rabbit IgG H&L (HRP) (Cat# PHY6000).

Detection: using chemiluminescence substrate and image were captured with CCD camera.