

# Anti-PIP2-1/3/4/5/6/9 antibody

Catalog: PHY4526S

## Product Information

<b>Description:</b>	Rabbit polyclonal antibody
<b>Background:</b>	PIP2-1/3/4/5/6
<b>Synonyms:</b>	PIP2-1/3/4/5/6
<b>Immunogen:</b>	KLH-conjugated synthetic peptide (15 aa from C terminal section) derived from <i>Oryza sativa</i> PIP2-1 (Os07g0448800), PIP2-3 (Os04g0521100), PIP2-4 (Os07g0448100), PIP2-5 (Os07g0448400), PIP2-6 (Os04g0233400) and PIP2-9 (Os07g0448200).
<b>Form:</b>	Lyophilized
<b>Quantity:</b>	150 µg
<b>Purification:</b>	Serum
<b>Reconstitution:</b>	Peptide affinity form antibody available upon request at <a href="mailto:info@phytoab.com">info@phytoab.com</a> . Reconstitution with 150 µl of sterile water. "Note: please spin tube briefly prior to opening it to avoid any losses that might occur from lyophilized material adhering to the cap or sides of the tube".
<b>Stability &amp; Storage:</b>	Use a manual defrost freezer and avoid repeated freeze-thaw cycles. 12 months from date of receipt, -20 to -70°C as supplied. 6 months, -20 to -70°C under sterile conditions after reconstitution. 1 month, 2 to 8°C under sterile conditions after reconstitution.
<b>Shipping:</b>	The product is shipped at 4°C. Upon receipt, store it immediately at the temperature recommended above.

## Application Information

<b>Recommended Dilution:</b>	Western Blot (1:1000-1:2000) Note: Optimal dilutions/concentrations should be determined by the end user.
<b>Expected / apparent MW:</b>	30 kDa
<b>Predicted Reactivity:</b>	Among species analyzed, the sequence of the synthetic peptide used for immunization is 100% homologues with the sequence in <i>Brassica napus</i> , <i>Panicum virgatum</i> , <i>Sorghum bicolor</i> , <i>Glycine max</i> , <i>Arabidopsis</i>

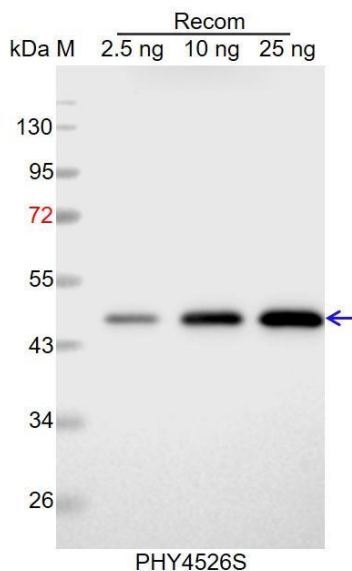
Research Use Only

*thaliana*, *Vitis vinifera*, *Brassica rapa*, *Zea mays*, *Setaria viridis*,  
*Cucumis sativus*, *Populus trichocarpa*, *Medicago truncatula*, *Nicotiana  
tabacum*, *Solanum tuberosum*.

The sequence of the synthetic peptide used for immunization is 93%  
(14 / 15) homologues with the sequence in PIP2-2 (Os02g0629200),  
PIP2-8 (Os03g0861300), PIP2-1 (Os04g0559700), PIP1-1  
(Os02g0666200) and PIP1-3 (Os02g0823100), and 80% (12 / 15)  
homologues with the sequence in Os10g0481100 and PIP2-7  
(Os09g0541000).

For more species homologues information, please contact tech  
support at [tech@phytoab.com](mailto:tech@phytoab.com).

## Application Example



Recom: 2.5 ng, 10 ng and 25 ng recombinant protein containing the  
peptide for immunization and having a molecular mass of 48 kDa.

**Electrophoresis:** 12% SDS-PAGE

**Transfer:** blotting to NC (nitrocellulose) membrane for 1 h.

**Blocking:** 5% skim milk at RT or 4°C for 1 h.

**Primary antibody:** 1:1000 dilution overnight at 4°C.

**Secondary antibody:** 1:10000 dilution using Goat Anti-Rabbit IgG H&L  
(HRP) (Cat# PHY6000).

**Detection:** using chemiluminescence substrate and image were  
captured with CCD camera.