

Anti-26S proteasome regulatory subunit 6A homolog A/B antibody

Catalog: PHY3637A

Product Information

Description:	Rabbit polyclonal antibody
Background:	RPT5a (Regulatory Particle 5a), one of the six AAA-ATPases of the proteasome regulatory particle. It's essential for gametophyte development. In Arabidopsis, the RPT5 subunit is encoded by two highly homologous genes, RPT5a and RPT5b. RPT5a and RPT5b show accession-dependent functional redundancy.
Synonyms:	RPT5A/B, REGULATORY PARTICLE TRIPLE-A ATPASE 5A / B, RPT5A
Immunogen:	KLH-conjugated synthetic peptide (15 aa from Central section) derived from <i>Arabidopsis thaliana</i> RPT5A (AT3G05530), RPT5B (AT1G09100).
Form:	Lyophilized
Quantity:	150 µg
Purification:	Immunogen affinity purified
Reconstitution:	Reconstitution with 150 µl of sterile 1XPBS (PH=7.4). "Note: please spin tube briefly prior to opening it to avoid any losses that might occur from lyophilized material adhering to the cap or sides of the tube".
Stability & Storage:	Use a manual defrost freezer and avoid repeated freeze-thaw cycles. 12 months from date of receipt, -20 to -70°C as supplied. 6 months, -20 to -70°C under sterile conditions after reconstitution. 1 month, 2 to 8°C under sterile conditions after reconstitution.
Shipping:	The product is shipped at 4°C. Upon receipt, store it immediately at the temperature recommended above.

Application Information

Recommended Dilution:	Western Blot (1:1000-1:2000) Note: Optimal dilutions/concentrations should be determined by the end user.
Expected / apparent MW:	47 kDa

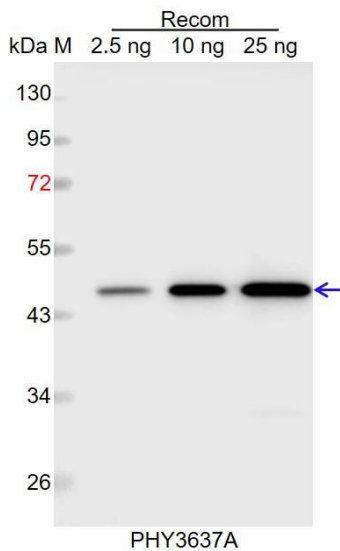
Research Use Only

Predicted Reactivity:

Among species analyzed, the sequence of the synthetic peptide used for immunization is 100% homologues with the sequence in *Glycine max*, *Brassica napus*, *Brassica rapa*, *Nicotiana tabacum*, *Gossypium raimondii*, *Zea mays*, *Triticum aestivum*, *Hordeum vulgare*, *Panicum virgatum*, *Setaria viridis*, *Sorghum bicolor*, *Oryza sativa*, *Spinacia oleracea*, *Medicago truncatula*, *Cucumis sativus*, *Solanum lycopersicum*, *Populus trichocarpa*, *Vitis vinifera*.

For more species homologues information, please contact tech support at tech@phytoab.com.

Application Example



Recom: 2.5 ng, 10 ng and 25 ng recombinant protein containing the peptide for immunization and having a molecular mass of 46 kDa.

Electrophoresis: 12% SDS-PAGE

Transfer: blotting to NC (nitrocellulose) membrane for 1 h.

Blocking: 5% skim milk at RT or 4°C for 1 h.

Primary antibody: 1:1000 dilution overnight at 4°C.

Secondary antibody: 1:10000 dilution using Goat Anti-Rabbit IgG H&L (HRP) (Cat# PHY6000).

Detection: using chemiluminescence substrate and image were captured with CCD camera.